



VMD0055 Provisional Versions of Jurisdictional Maps of Allocated Deforestation Risk

Technical Briefing
January 15, 2025

Photo courtesy of Keneco. Mindanao Tree Planting Program for our Climate and
Communities (MinTrees), Philippines (Verra Project 2412)

AGENDA

- Introductions and Housekeeping
- VM0048 & VMD0055
- VMD0055 Activity Data Requirements and Development Process
- Data Tiers and Purpose
- PADA and Allocation Overview
- Current Status and Next Steps
- Live Q&A

Housekeeping

- Feel free to ask questions via the Q&A feature.
- Please limit questions and comments to the scope of the presentation
- We will try to answer as many questions as possible in the time we have; however, if we are unable to get to your questions, we will identify some common threads and answer those on our website.
- A recording of this video will be available on our website soon after the call concludes.



VM0048 Reducing Emissions from Deforestation and Forest Degradation

- Ensures integrity of GHG accounting for individual projects within a jurisdiction
- Uses up-to-date science, data, and technologies
- Framework to be used with modules for specific activity types, released November 2023
- Existing module: *VMD0055 Estimation of Emissions Reductions from Avoiding Unplanned Deforestation*
- Available resources:
 - [VM0048](#)
 - [VMD0055](#)
 - [Timeline for data release](#)
 - [Transition process for REDD AUD projects](#)
 - [FAQs](#)

A person wearing a red shirt is shown in a close-up, looking intently at a plant. The plant has large green leaves and clusters of small, colorful berries (red, green, and black). The person's hands are positioned to examine the berries. The background is blurred, suggesting an outdoor setting. The entire image has a semi-transparent blue overlay.

**VMD0055 Activity Data Requirements
and Development Process**

Key Definitions

- **Unplanned Deforestation Activity Data (UDef-AD):** The total area of unplanned deforestation within the jurisdiction, as determined by visual interpretation of high-resolution imagery over sample plots and a statistical estimator. The annual rate observed during the Historical Reference Period (HRP) is projected forward to the Baseline Validity Period (BVP).
- **Jurisdictional Forest Cover Benchmark Map:** A single raster map that identifies eight forest cover transition classes. It is created by determining the presence or absence of forests at the start, mid-point, and end of the HRP.
- **Allocated Deforestation Risk Map:** A raster map where each pixel represents a proportion of the UDef-AD, with areas estimated to be at higher risk of deforestation allocated larger proportions. Risk is estimated via models that use explanatory variables related to deforestation risk, e.g., distance to roads, distance to urban centers, population density, etc.
- **Baseline Allocation:** The process by which a project developer receives a proportion of the UDef-AD via an allocated deforestation risk map.

Data Requirements

Primary Data/Product	Minimum Requirement
Satellite imagery for visual interpretation of UDef-AD	30m before 2015; 10m after 2015
Uncertainty of sample-based deforestation estimates	≤ 20% at a 90% CI; ≤ 10% to avoid discount
Accuracy of FCBM change category (closed forest)	90% & 70% for forest (end of HRP) and deforestation (during HRP) classes, respectively
Accuracy of FCBM change category (open forest, i.e., <50% CC)	80% & 60% for forest and deforestation classes, respectively
Allocated deforestation risk map	At least two alternative models must be developed to achieve a more skillful model with a lower median absolute error than the naive benchmark.

Process

Verra

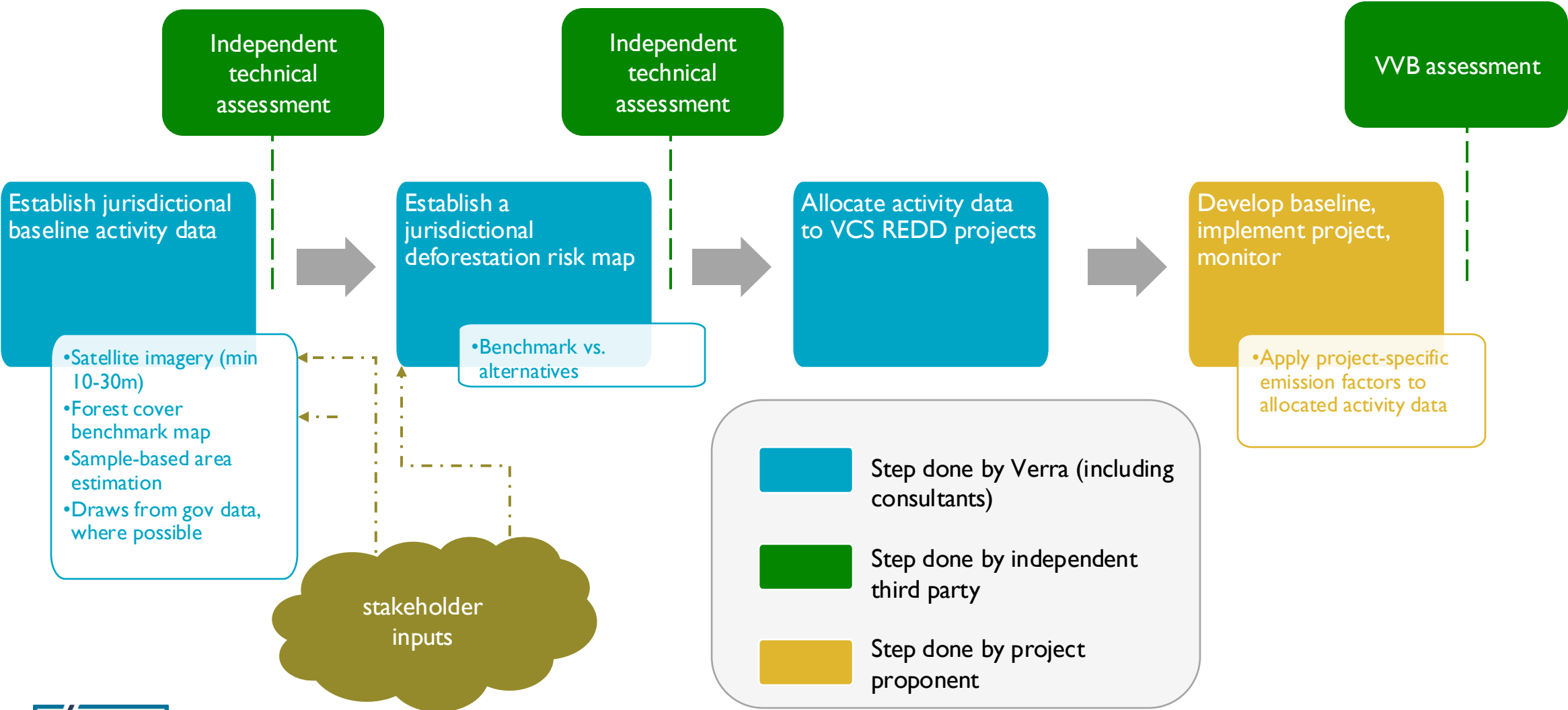
- Jurisdictional UDef-AD collection*
- Jurisdictional FCBM development*
- Jurisdictional risk mapping*
- Baseline allocation of UDef-AD to projects

* Subject to third-party review

Project Developer

- Development of project-specific emissions factor map
- Estimate baseline emissions using allocated UDef-AD map and project-specific emission factors
- Project implementation and monitoring

Process



A person in a light-colored shirt is reaching up to touch a branch of a tree against a blue sky. The image is overlaid with a dark blue tint. The text "Data Tiers and Purpose" is centered in white.

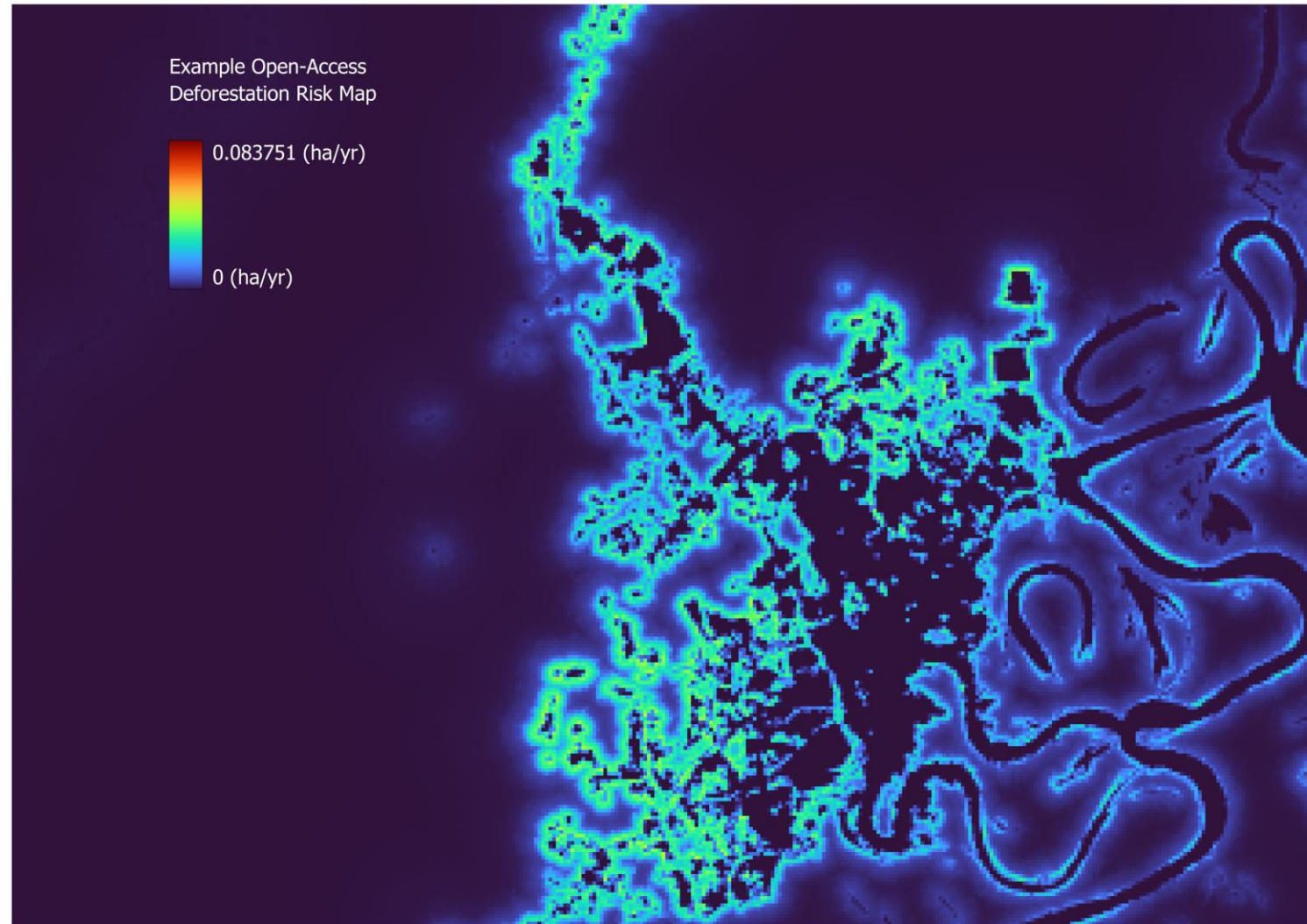
Data Tiers and Purpose

Data Tiers

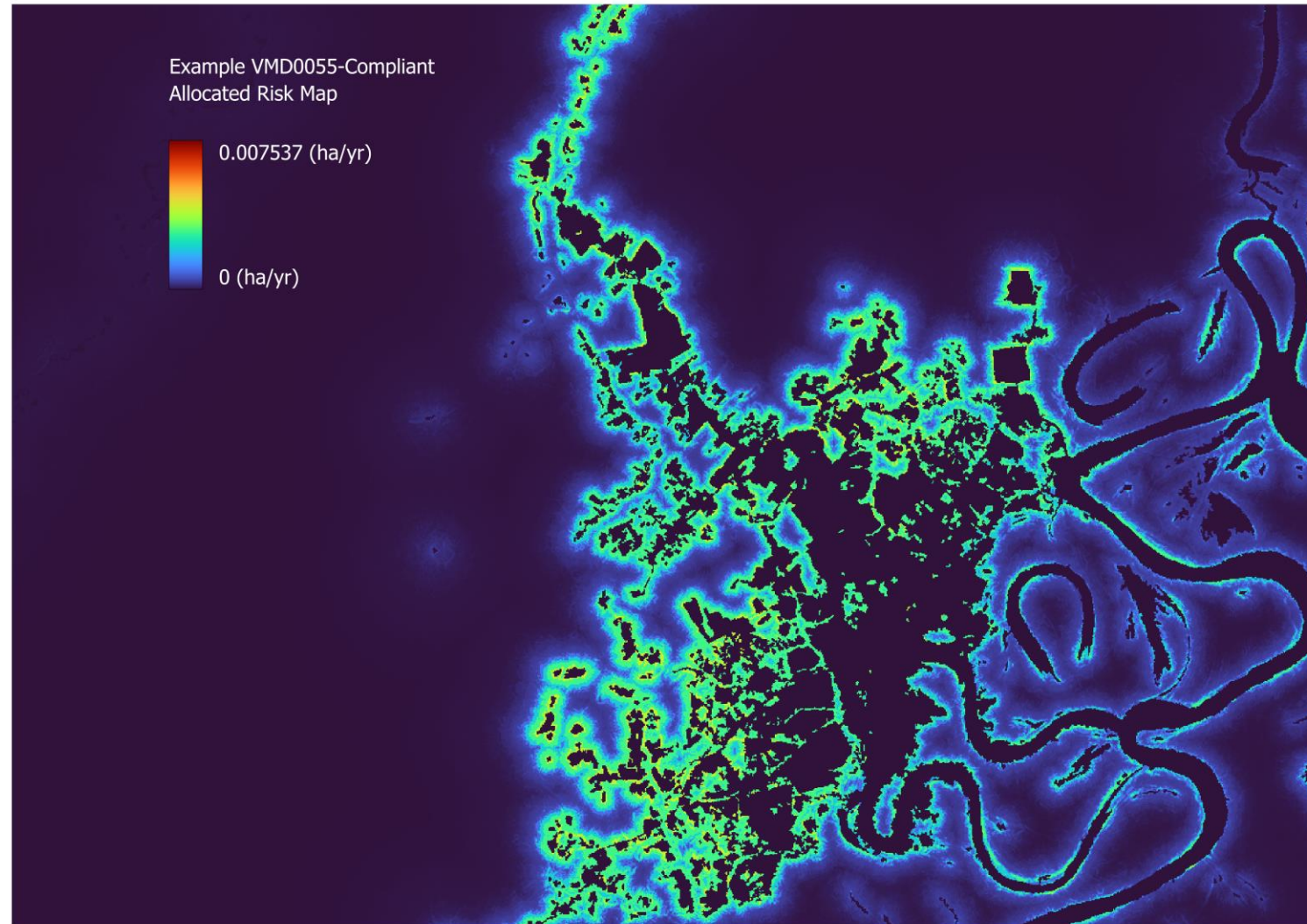
Open-access tier data is simply our current full-resolution best jurisdictional deforestation risk map, resampled (sum) to 100m spatial resolution.

Data Tier	Provisional Open-Access Data	Finalized Open-Access Data	VMD0055-Compliant Data
Spatial Resolution	100m	100m	Full (25-30m)
Review Status	Review pending	Review complete	Review complete
Primary Purpose	Project design, due diligence, research	Project design, due diligence, research	Project-level UDef-AD baseline allocations
Cost	Free	Free	Subject to PADA pricing schedule
Access	Download link after completing form	Download link after completing form	Verra Project Hub
Eligible for Project Allocation?	No	No	Yes

Data Tiers



Data Tiers



A man in a red shirt is shown in a close-up, focused on examining a branch of coffee plants. He is holding a cluster of coffee cherries, which are in various stages of ripeness, ranging from green to red. The background is a soft-focus green, suggesting a coffee plantation. The overall image has a dark, teal-colored overlay.

Current Status and Next Steps

Current Status and Next Steps

Current Status

- Continuing to develop UDef-AD and FCBMs for Phase 2 jurisdictions. Some already delivered.
- Ongoing risk mapping for Phase I jurisdictions. Guatemala and Colombia are likely the next provisional open-access data posted to the website.
- Some Phase I UDef-AD required revision due to mistakes identified by the third-party review. Necessary collections caused delays.

Next Steps

- Complete risk mapping for remaining Phase I jurisdictions and post provisional data to the website.
- Complete third-party review of Phase I risk maps.
- Make VMD0055-compliant data available via the Project Hub

A photograph of a small boat on the ocean at sunset. Two people are on the boat, their silhouettes visible against the bright sky. One person is standing and holding a net, while the other is bent over. The water is dark blue with gentle ripples. The sky is a mix of orange, yellow, and blue, with some clouds. The text "Live Q&A" is overlaid in white in the center of the image.

Live Q&A



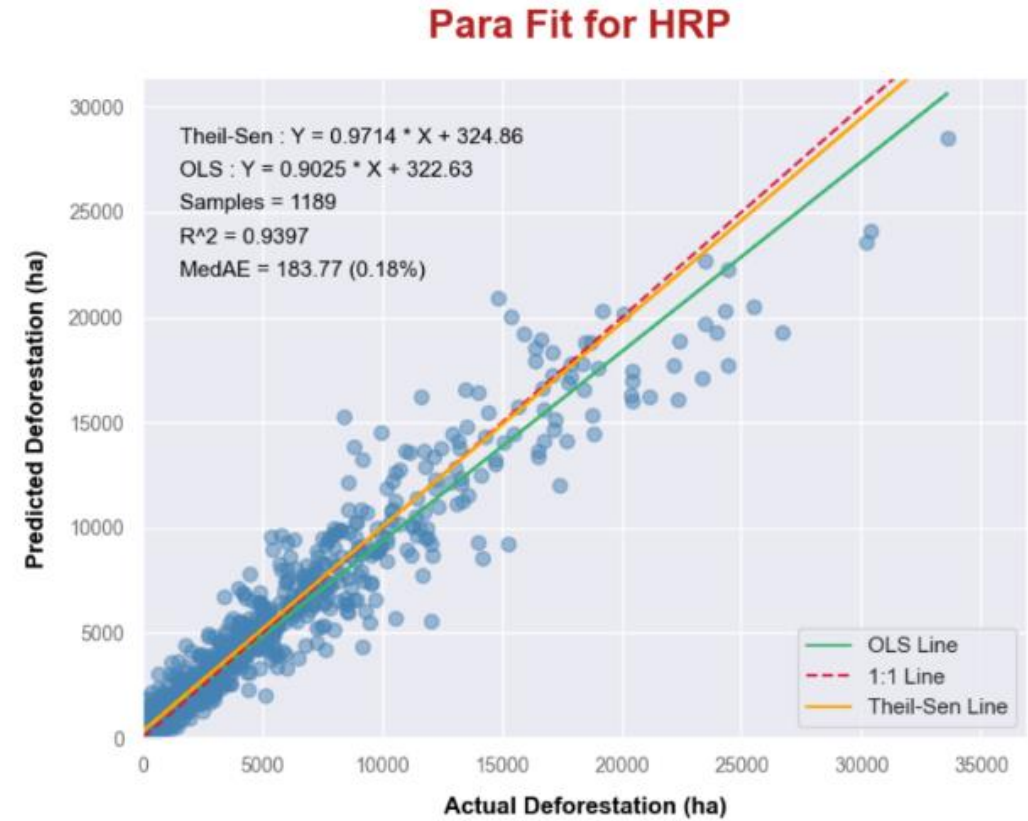
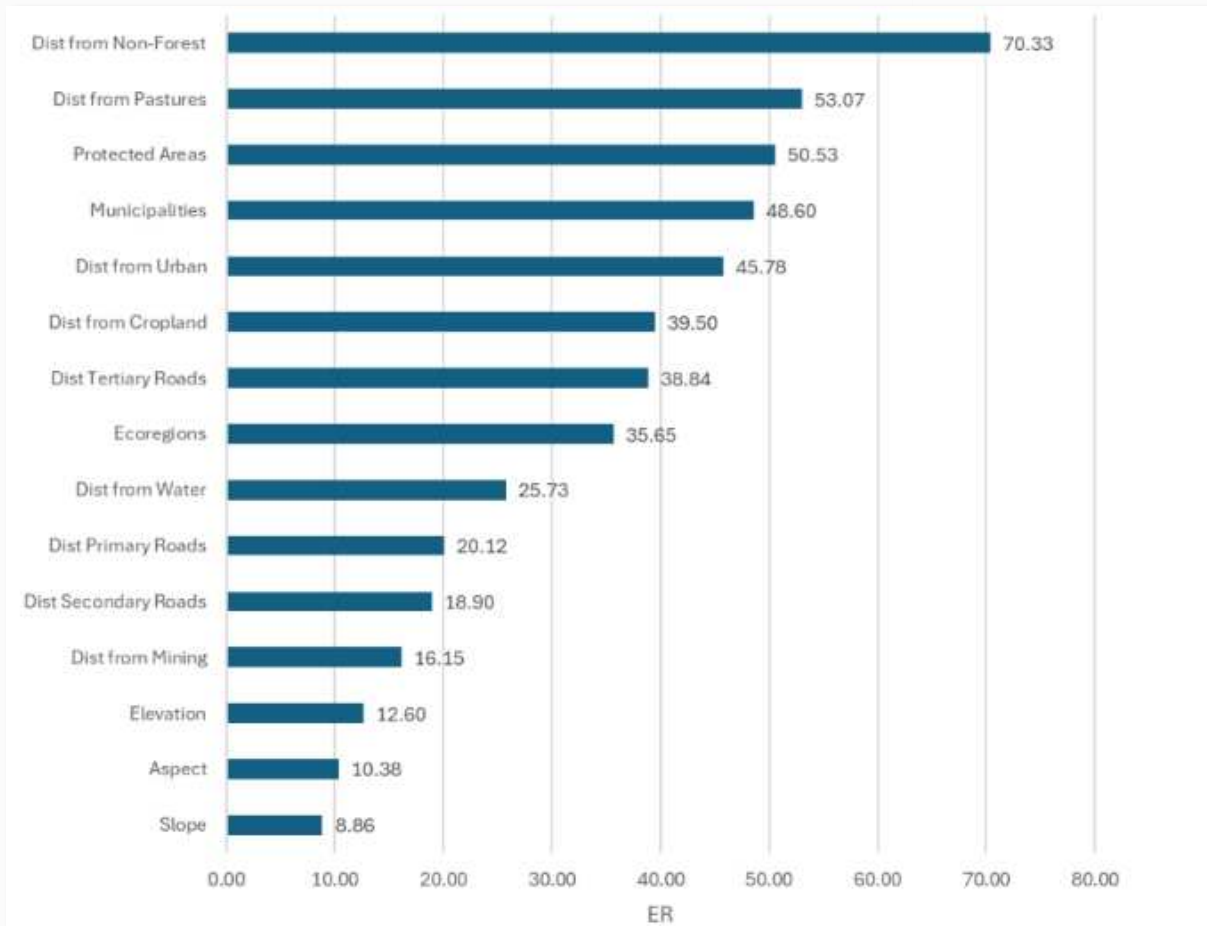
THANK YOU

Please direct questions or comments to:

Verra's Forest Carbon team

forestcarbon@verra.org

Alternative Model: Para – Random Forest



Alternative Model: Para – Random Forest

